


YOUR COMPLIMENTARY GUIDE TO

SKYE & LOCHALSH GALLERY AND STUDIO TRAILS



ELEMENTS OF
EXCELLENCE 6

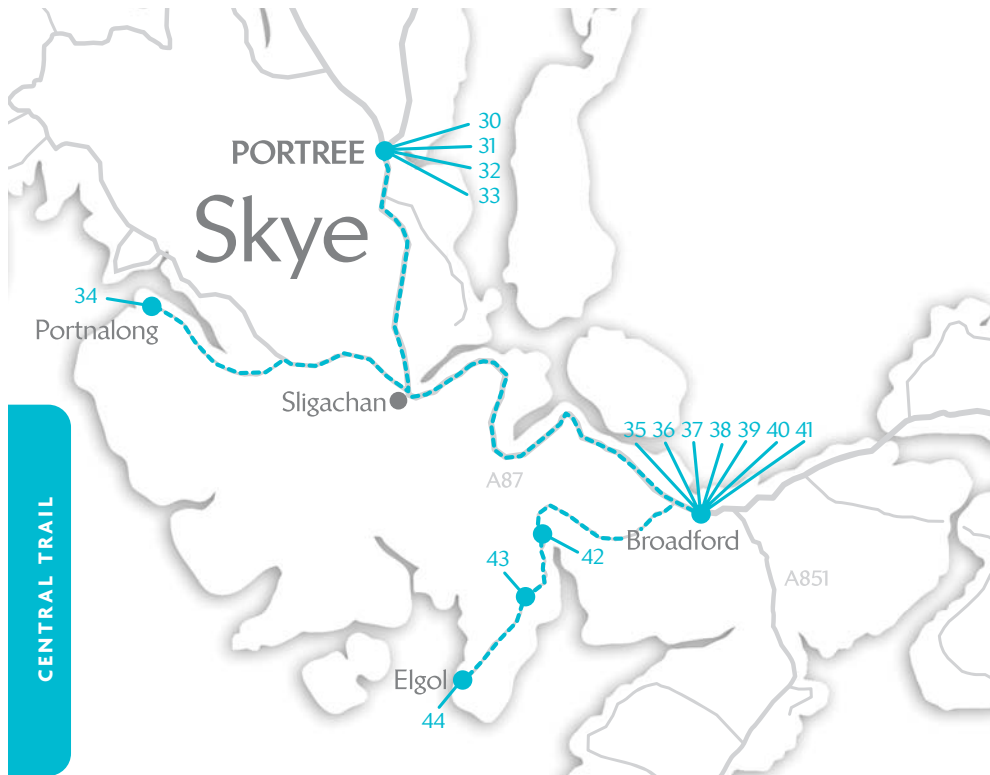


We hope that you will enjoy meeting the artists and craftspeople along our North, Central and South Trails, three spectacular routes offering work as intriguingly diverse as the scenery you will experience along the way.

Elements of Excellence 6 invites you to discover and enjoy the same wonderfully inspirational landscape that is home to so many artists and craftspeople. Some of Europe's most dramatic scenery and challenging weather patterns provide the perfect backdrop to studio and gallery visits, where you can meet the artists and discuss their works and their ideas. Hopefully you will take home an original!

UP TO THE MINUTE ONLINE INFORMATION IS AVAILABLE TO ASSIST YOUR CHOICES ALONG THE TRAILS, OUR ARTISTS AND CRAFTSPEOPLE UPDATE THEIR OWN WORKS AT:

www.skye-arts-crafts.co.uk



CENTRAL TRAIL

CENTRAL TRAIL

- 30 CUILLIN BEADS
- 31 THE TARTAN COMPANY
- 32 CUILLIN CRAFTS
- 33 RONALD MACDONALD
- 34 LOCH HARPORT GALLERY
- 35 ALAN CAMPBELL AT WOODRISING GALLERY
- 36 THREE HERONS STUDIO

- 37 SEAN CAMERON JEWELLERY
- 38 SANDBANK STUDIO
- 39 THE HANDSPINNER HAVING FUN
- 40 SKYLINE CERAMICS
- 41 JAMES ADAMS
- 42 RUPERT COPPING
- 43 DUNCAN HOUSE
- 44 HERMIONE LAMOND

TRAIL TRAITS

Travelling our Trails, from busy main roads to remote tracks, reveals not only very different locations but a real diversity of artist and craftsperson. Ranging from commercial premises to small part-time craftmakers working from home, they have one thing in common, they offer you a warm welcome.

Visitor Attraction - open all year round, and seven days in the Summer, often with an international profile, they will offer full visitor facilities, including on-line ordering and full international postal service.

Gallery/Shop - commercially run and also keeping regular business hours, they will combine displays of invited artists work with a range of crafts and gifts from the Island.

Gallery - showing a range of work from several invited artists and craftspeople. As galleries are resident artist-run, they offer experienced and knowledgeable help and advice when purchasing works.

Artist showing work - an artist specialising in works inspired by the Island, but not living here full-time. Contactable by telephone or e-mail, their works can be viewed at the stated locations.

Artist's or Craftmaker's own Studio - here you can meet the artist or craftmaker in person, and talk to them about their work. These are often premises attached to or part of private houses, will have their own display area and are generally not as definitive about their hours. Many small studios do not have credit / debit card facilities. If you have a specific artist you wish to meet, a call ahead is always a good idea.

CENTRAL TRAIL



30 CUILLIN BEADS

CRAFTMAKER'S OWN STUDIO

'DRUIMGORM', BRIDGE ROAD, PORTREE
ISLE OF SKYE IV51 9ER

Contemporary beaded jewellery handmade by us on the Isle of Skye. Silver and glass beads made in our workshop, mixed with semi-precious stones, Swarovski crystals and freshwater pearls sourced from around the world. Commissions undertaken.

OPEN: MAY TO OCTOBER FROM 10AM.
WINTER HOURS VARY.
PLEASE PHONE AHEAD USING MOBILE NUMBER.

t: 01478 612705 / 07747 038630 - Frances / Susan
e: cuillinbeads.skye@yahoo.co.uk
w: www.cuillinbeads.co.uk



31 THE TARTAN COMPANY

GALLERY / SHOP THE GREEN, PORTREE, ISLE OF SKYE IV51 9BT
A contemporary range of interior textiles and accessories, all individually made, therefore each piece is unique. A modern slant on traditional tartans and tweeds.

The shop also has a selection of eclectic gifts by other local artists.

OPEN: MONDAY TO SATURDAY, 9.30AM - 5.30PM.
CLOSED SUNDAY, JANUARY & FEBRUARY - LIMITED
OPENING HOURS - PHONE TO CHECK.

t: 0845 1259749 - Joan Macleod
e: joan@thetartanco.com
w: www.thetartanco.co.uk



32 CUILLIN CRAFTS

UNIT 2, ARMADALE HOUSE, BANK STREET
PORTREE, ISLE OF SKYE IV51 9DA

Skye's largest selection of gifts and jewellery made on the island from genuine Skye Marble. We have a good selection of arts and crafts by local makers.

Gifts priced to suit all pockets from fridge magnets to bronze sculptures, including our best-selling Isle of Skye Perfume, Clan Soap and Clan Perfume.

Scotland's only exhibit of "The Evolution of the Haggis".

OPEN: MONDAY TO SATURDAY

t: 01478 611119 - Gus MacDonald & Dorothy Martin

e: info@skyeцуillinmarbles.co.uk

w: www.skyecuillinmarbles.co.uk



33 RONALD MACDONALD

GALLERY

AN T-EILEAN PHOTOGRAPHIC GALLERY, PARK ROAD,
PORTREE, ISLE OF SKYE IV51 9EP

Inspirational fine art photographs of the Isle of Skye in all moods and seasons, on paper and canvas. Wide range of sizes with extra large canvas prints a specialty.

OPEN: APRIL TO OCTOBER: TUESDAY TO SATURDAY, 10AM - 5PM
NOVEMBER TO MARCH: WEDNESDAY TO FRIDAY, 11AM - 5PM (CLOSED JANUARY)
HOURS MAY VARY, PLEASE PHONE TO CHECK.

t: 07876 333653 - Ronald MacDonald
e: ronmacdphoto@gmail.com
w: www.ronaldmacdonaldphotography.co.uk




CENTRAL TRAIL

MENU North Trail Slideshow

Click any thumbnail to view that photo, or press Play Slideshow

← [Thumbnail 1] [Thumbnail 2] [Thumbnail 3] [Thumbnail 4] [Thumbnail 5] [Thumbnail 6] [Thumbnail 7] [Thumbnail 8] [Thumbnail 9] [Thumbnail 10] →

Photo Slideshow (Previous Photo) Next Photo



Orbost Gallery

A long-established gallery and working studio showing artworks of great skill and sensitivity representing the Andrew Macdonalds, Martin Macpherson and the wood engravings of Paul Macneil. Artists materials are on site.

[Link to our website.](#)

Photo 22 of 33

SLIDE RULE
YOU CAN ALWAYS
KEEP UP TO DATE AT:
www.skye-arts-crafts.co.uk



34 LOCH HARPORT GALLERY

7 PORTNALONG, ISLE OF SKYE IV47 8SL

GALLERY

Established in 1983 by Jean Thomas (and formerly known as 'The Little Gallery'), Loch Harport Gallery has since been extended and now offers a wide range of fine art. Jean's oils, watercolours and etchings depict Skye's scenery and wildlife while her son Dave Thomas concentrates mainly on seascapes and figurative studies.

Laurence Broderick's bronze sculptures are also on display.

OPEN: APRIL TO OCTOBER, 10AM - 6PM
PLEASE TELEPHONE OUT OF SEASON AND AT WEEKENDS.

t: 01478 640463 - Jean Thomas
e: jeanthomas@lineone.net
w: www.lochharportgallery.com





35 ALAN CAMPBELL (Woodrising Gallery)

GALLERY

OLD CORRY, BROADFORD, ISLE OF SKYE IV49 9AB

Woodrising Gallery is the stimulating venue for the display of extraordinary images by Skye photographer Alan Campbell.

The collection of photographs, created from the unique environment on and around the Isle of Skye, is wonderfully presented in the spacious Gallery where visitors have the time to relax and appreciate the images complemented, if you wish, with some freshly-ground coffee.

OPEN: APRIL TO OCTOBER: MONDAY TO FRIDAY,
10AM - 5PM & SATURDAY 10AM - 1PM
NOVEMBER TO MARCH: FREQUENTLY OPEN BUT DAYS
& HOURS VARY.

t: 01471 820300 - Alan Campbell
e: alan@woodrising-gallery.co.uk
w: www.woodrising-gallery.co.uk



36 THREE HERONS STUDIO

ARTIST'S OWN STUDIO

THREE HERONS STUDIO, BY BROADFORD HOSPITAL,
HIGH ROAD, BROADFORD, ISLE OF SKYE IV49 9AA

Visit our studio for superb Scottish landscape fine art photographic prints in both colour and monochrome by Ken Bryan. Textile art by Polly Bryan. Paintings and cards by both.

OPEN: ALL YEAR: TUESDAY TO FRIDAY, 10AM - 5PM
& SATURDAY 10AM - 1PM

t: 01471 822152 - Ken & Polly Bryan

e: polly.bryan@btinternet.com

w: www.isleofskye.net/threeherons/kenbryan

37 SEAN CAMERON JEWELLERY

BROADFORD BUSINESS CENTRE, BROADFORD,
ISLE OF SKYE IV49 9AB
(ABOVE BROADFORD PETROL STATION)

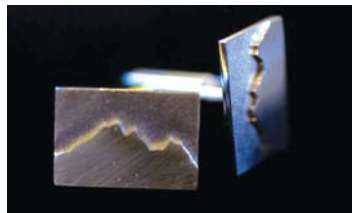
Working with white and yellow gold, platinum and silver, I draw inspiration from the ideas and symbols of eternity found in the "Book of Kells", which I capture using traditional methods.

OPEN: MONDAY TO FRIDAY, 10AM - 5PM
SATURDAY BY APPOINTMENT.

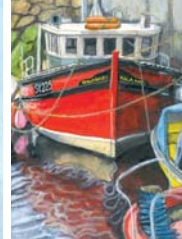
t: 01471 822873 - Sean Cameron

e: s.camjewel@btinternet.com

w: www.seanameronjewellery.com



ARTIST'S OWN STUDIO



38 SANDBANK STUDIO

GALLERY DUNCAN CURRIE, OLD PIER RD, BROADFORD,
ISLE OF SKYE IV49 9AE

Fine quality paintings of Skye and the North West coast. Focussing on geological structure and the play of light, Duncan paints in watercolour and mixed media. Fishing boats are also a recurring theme, adding greater colour to the range of his work. Work by other artists (e.g. Pam Carter, Liz Myhill) are on show alongside his own at the studio.

Cards and prints also available.

OPEN: MONDAY TO SATURDAY, 11AM - 6PM
12AM - 6PM DURING WINTER.

t: 01471 822011/064 - Duncan Currie

e: duncan.currie@tiscali.co.uk

w: www.duncancurrie.co.uk





39 THE HANDSPINNER HAVING FUN

THE OLD PIER RD, BROADFORD,
ISLE OF SKYE IV49 9AE

Alana Design, Teo's Handspun and more than 60 knitters / spinners come together to create this modern woolly experience - welcome!

OPEN: 9.30AM - 5.30PM

t: 01471 822876 - Teo Becu
e: teoshandspun@yahoo.co.uk
w: www.teoshandspun.com

40 SKYELINE CERAMICS

'GRIANACH', HARRAPOOL, BROADFORD
ISLE OF SKYE IV49 9AQ

Working studio and small gallery - individual pieces, handmade in porcelain and stoneware - sheep with character, porcelain pictures, delicate bowls, bookends, pebble-porcelain and more.

OPEN: EASTER TO OCTOBER: MONDAY TO SATURDAY,
10AM - 1PM & 2PM - 5PM
(ALSO SOME LATE EVENINGS AND OCCASIONALLY
CLOSED SATURDAY OR MONDAY)
OCTOBER TO EASTER: OPENING HOURS VARY

t: 01471 822023 - Lesley Jones
e: lesley@skyelineramics.com
w: www.skyelineramics.com



41 JAMES ADAMS

ARTIST'S OWN STUDIO

WILLOWBANK, 4 LOWER HARRAPOOL, BROADFORD,
ISLE OF SKYE IV49 9AQ

Contemporary and Naive paintings in acrylic and oil. "Responding to my local environment, narrative instructs my paintings which in turn offer unusual perspectives against rhythmic compositions." Prints and cards available.

OPEN: OPEN ALL YEAR. PLEASE TELEPHONE.

t: 01471 822271 - James Adams

e: info@jamesnewtonadams.co.uk

w: www.jamesnewtonadams.co.uk



42 RUPERT COPPING

ARTIST'S OWN STUDIO

QUARTER OF TEN, TORRIN, ISLE OF SKYE IV49 9BA

Landscape and figurative paintings in a modern style, executed in oil on textured backgrounds. Also watercolours. Prices to suit most pockets.

OPEN: MONDAY TO SATURDAY, 10AM - 5PM
(OR BY APPOINTMENT)

t: 01471 820280 - Rupert Copping

e: enquiries@rupertcopping.co.uk

w: www.rupertcopping.co.uk



43 DUNCAN HOUSE

CRAFTMAKER'S OWN STUDIO STRATHAIRD STEADING, STRATH, ISLE OF SKYE IV49 9AX

Fine Jewellery and Objects of Art, handmade on site by Garth Duncan. Creations with an attention to detail and sympathy with materials that has all but disappeared. A must see for discerning treasure hunters.

OPEN: MID MARCH TO OCTOBER, 10AM - 6PM.
OTHER MONTHS PLEASE PHONE AHEAD.

t: 01471 866366 - Garth Duncan

e: enquiry@duncan-house.com

w: www.duncan-house.com

44 HERMIONE LAMOND

CRAFTMAKER'S OWN STUDIO ELGOL SHOP, ELGOL, ISLE OF SKYE IV49 9BQ

The fishing floats are each painted with boats, birds, flowers and weather!

We also do homebaking and coffee!

OPEN: 15TH MARCH - 15TH OCT

MON - SAT 10AM - 5PM

16TH OCT - 14TH MARCH

MON, WED & SAT 10AM - 1PM

t: 01471 866329

e: elgolshop@btconnect.com

w: elgolartfloats.com





ELEMENTS OF EXCELLENCE 6

Credits

Edition number 6, for 2011, is produced for the [Skye and Lochalsh Arts and Crafts Association](#) by the Elements Of Excellence team:

Alan Campbell	Administration	(alan@woodrising-gallery.co.uk)
Phil Gorton	Editorial	(phil@philgortonstudio.demon.co.uk)
Peter McDermott	Design and digital pre-press	(peter@mcdcreative.co.uk)
Cathy Myhill	Publicity & Distribution	(cathy@dandelion-designs.co.uk)

Printed in Scotland by Thomson Colour Printers, Glasgow.

We welcome comments and questions about our booklet, and about the Arts and Crafts Association, through 'enquiries' on our website www.skye-arts-crafts.co.uk.

The Association's website is built and maintained by [Jim Caldwell](#) (jimmy_caldwell@hotmail.com)

Elements of Excellence and the website www.skye-arts-crafts.co.uk are funded entirely by member contributions. We receive no financial assistance from any public or funding body, and no sponsorship from any self-interested party.



YOUR COMPLIMENTARY GUIDE TO

**SKYE & LOCHALSH
GALLERY AND
STUDIO TRAILS**

ELEMENTS OF
EXCELLENCE 6

